

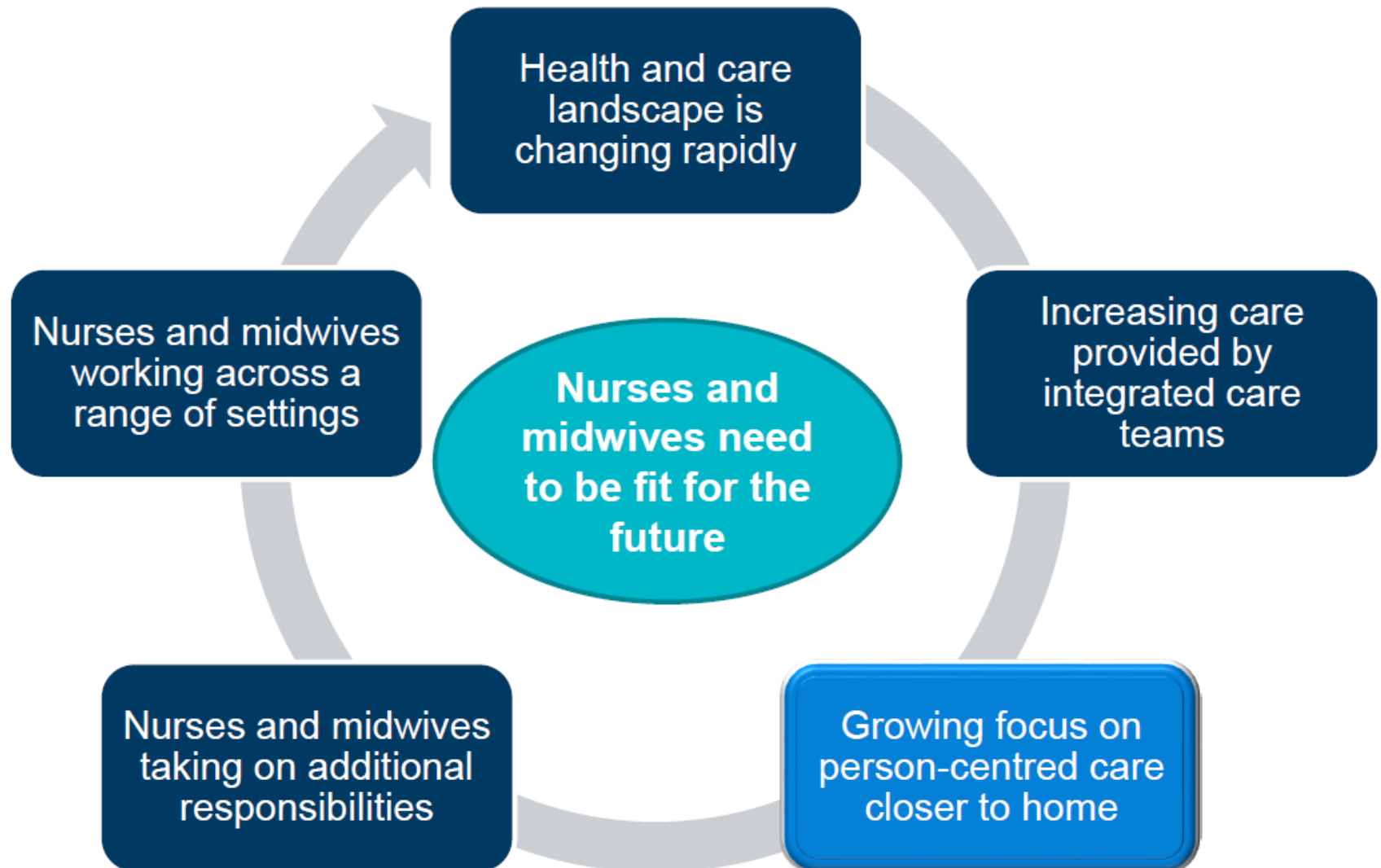
Nurse Education: *Apprentice to expert*

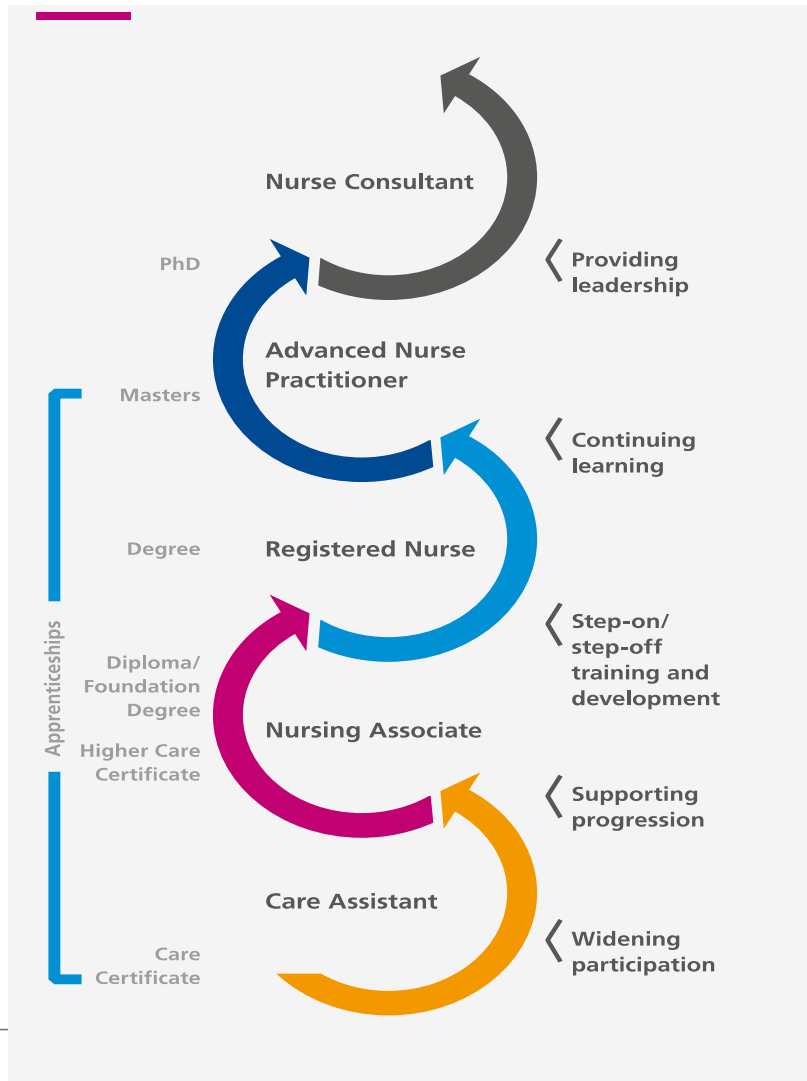
University of
Huddersfield
Inspiring tomorrow's professionals

Dr Joanne Garside
Head of Post Registration Education



Education: the changing context





Shape of Caring – HEE response:

<https://hee.nhs.uk/sites/default/files/documents/Raising%20the%20Bar%20-%20Shape%20of%20Caring%20-%20HEE%27s%20response.pdf>

- New role - work alongside healthcare support workers and RN focusing on hands on patient care;
- Bridge the gap between healthcare support workers, who have a care certificate, and registered nurses;
- Two year programmes - learning 'on the job' via an apprenticeship leading to a foundation degree;
- Access to RN training - through either a degree level nurse apprenticeship or a shortened nursing degree at university;
- Nursing associates will support nurses to spend more time using their specialist training to focus on clinical duties and take more of a lead in decisions about patient care.



- Sept 2016 – Test sites (n=11) Jan 2017 (n=24)
- NMC regulation

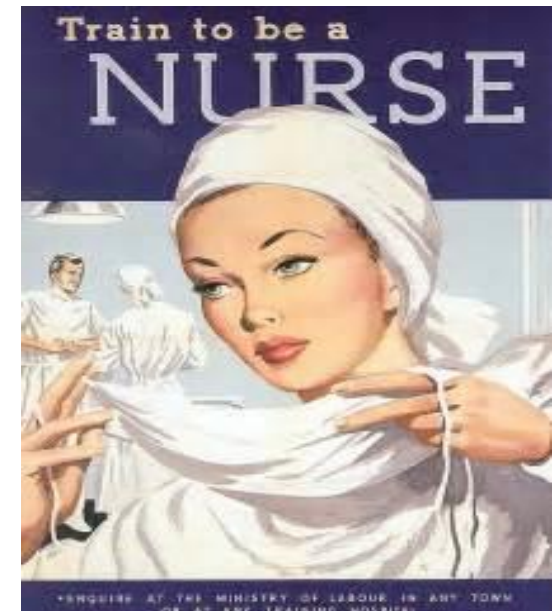
Nurse Associate curricula:

- <https://www.hee.nhs.uk/sites/default/files/documents/Nursing%20Associate%20Curriculum%20Framework%20Feb2017.pdf>

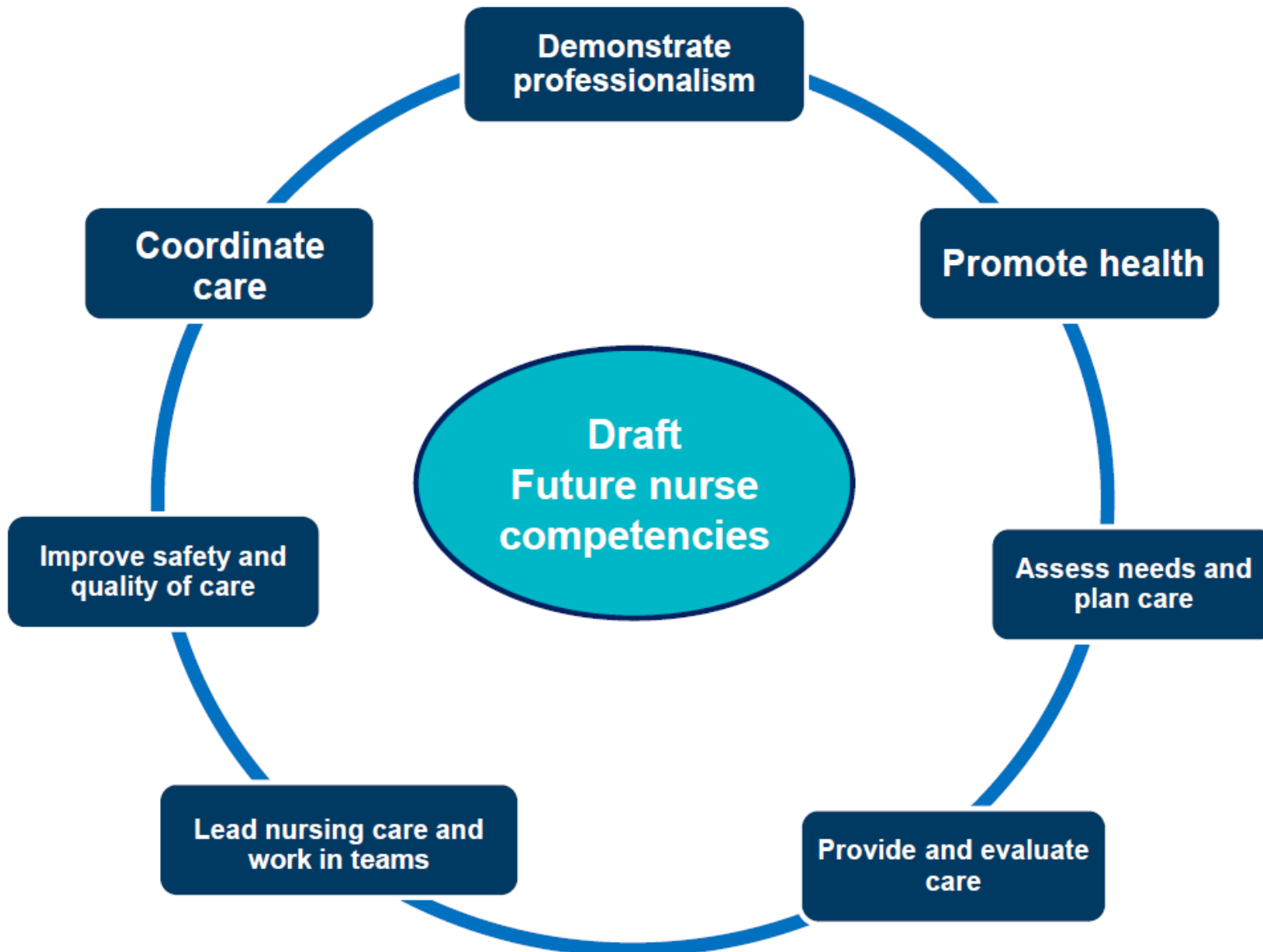


Registered Nurse Education

- New standards drafted 2016 – focus on what RN should look like in 2025?
- Public consultation Spring 2017 - anticipated publication in early 2018 with an option for early adopter HEIs to implement from September 2018.
- The standards will be adopted by all higher education institutions from September 2019.
- Embrace the Code;
- There will be a single framework with consistent outcome based standards;
- 7 Still debating whether to refer to competencies or proficiencies;
- Review of practice assessment and practice hours part of the review;
- ?? Changes to Fields
- ??? Prescribing at point of registration?
- Preceptorship



Future nurse competencies



Pre-registration funding arrangements from August 2017

- Nursing, midwifery and allied health students, replacing grants and bursaries with standard student loans.
- Those already receiving bursaries will continue to do so.
- Impact on recruitment - 2016 - turned away 37,000 applicants to nurse training places
- Cap off so HEI will be able to offer up to 10,000 more nursing, midwifery and allied health professional (AHP) training places.
- The new loans will ensure that trainees will receive around 25% more funding support at university, an increase that will make a real difference to students.



Student loan – example payback

9% of income over £1750 or £21,000 a year :

Up to £21,000	£0
£23,500	£18
£25,000	£29
£27,000	£45



2015/16:

- **£2,373,635**

2016/17:

- **£1,139,022**

2017/18:

- ...?
- Move to employer or self funding
- Student loans ...



**Health Education
Yorkshire and the Humber**

- Apprenticeships levy – Any employer with a pay bill over £3 million each year, you must pay the apprenticeship levy from 6 April 2017.
- Apprenticeship Levy is charged at 0.5% of the annual pay bill.
- All levels





National Standards for
Adult Critical Care
Nurse
Education

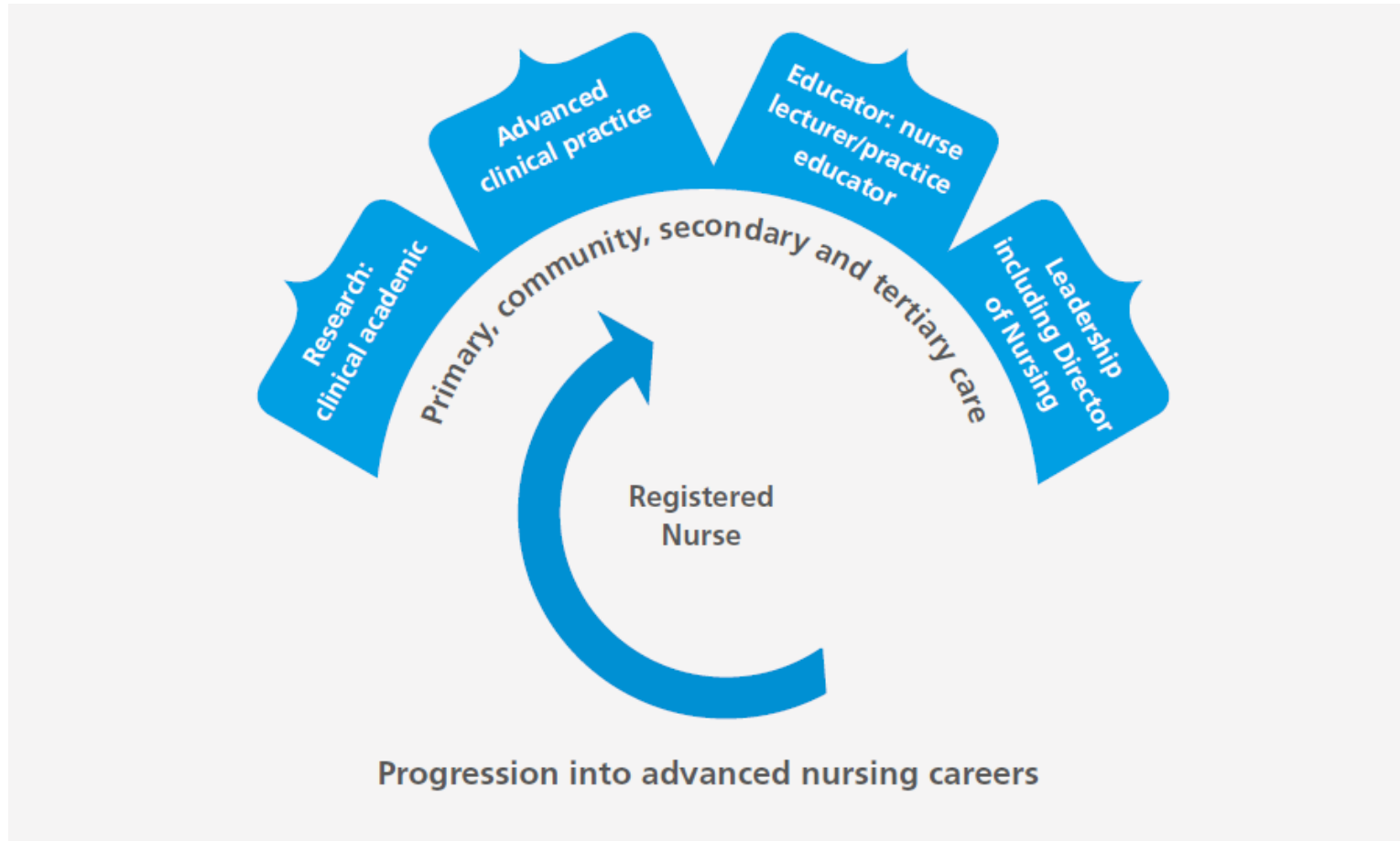
Core curriculum and competency development
for registered nurses in adult critical care



Version 2

- Apprenticeship standards
- Trailblazers
- Employer driven
- Training providers
- Skills Funding Agency
<https://www.gov.uk/government/organisations/skills-funding-agency>

Progression to Advanced & Leadership roles



<https://www.youtube.com/watch?v=LGj58uJu3Fk>

Academic views?

RN - Graduate and Masters
level

Post Reg - Stage 2/3
Level 6 v level 7

Nurses with PhDs

Higher Education & Career
pathways:

Postgraduate and post registration study at Huddersfield 2017/18

Continuing your Professional Development

Health and Social Care Professions



Any questions?

