

FLORENCE NIGHTINGALE FOUNDATION

Gemma Stacey (Deputy CEO)

About FNF

Our Mission

Dedicated to supporting and developing nurses and midwives to improve care and save lives across the world, maintaining Florence Nightingale's legacy.

Our Vision

Over the next five years, with our partners, we will continue to grow as a world-class charity, supporting nurses and midwives to develop the personal and leadership skills they need to improve care, save lives, and promote well-being across the world.

We aim to reach one million nurses and midwives by 2027



Our Priorities for 2022-27

Our strategy focusses on five specific priorities to achieve the greatest reach and transformational impact:



2022-2027 Strategy

**Improving Care & Saving Lives:
A Million Nurse and Midwife Leaders**



Supporting, developing and transforming
compassionate leaders



Influencing policy



Promoting evidence-based practice



Growing FNF Academy membership



Creating a financial, social, cultural and
environmentally sustainable future

HOW WELL CAN YOU PREDICT
OUTCOME OF YOUR ACTION?



Complexity

Many different, interconnected factors come into play, with the potential to cause chaos and confusion.



Volatility

Change is rapid and unpredictable in its nature and extent.



Ambiguity

There is a lack of clarity or awareness about situations



Uncertainty

The present is unclear and the future is uncertain

HOW MUCH DO YOU KNOW ABOUT THE SITUATION?



HOW WELL CAN YOU PREDICT
OUTCOME OF YOUR ACTION?




Complexity
requires
Understanding

Volatility
requires
Agility



VUCA
Action Matrix



Ambiguity
requires
Understanding

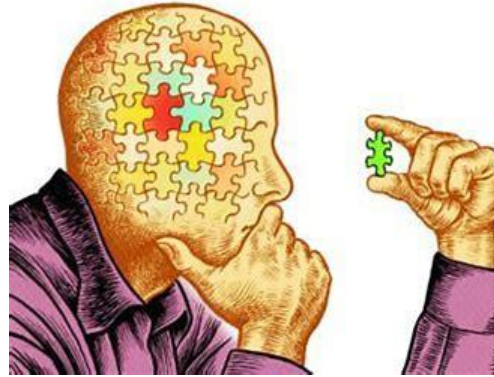
Uncertainty
requires
Vision



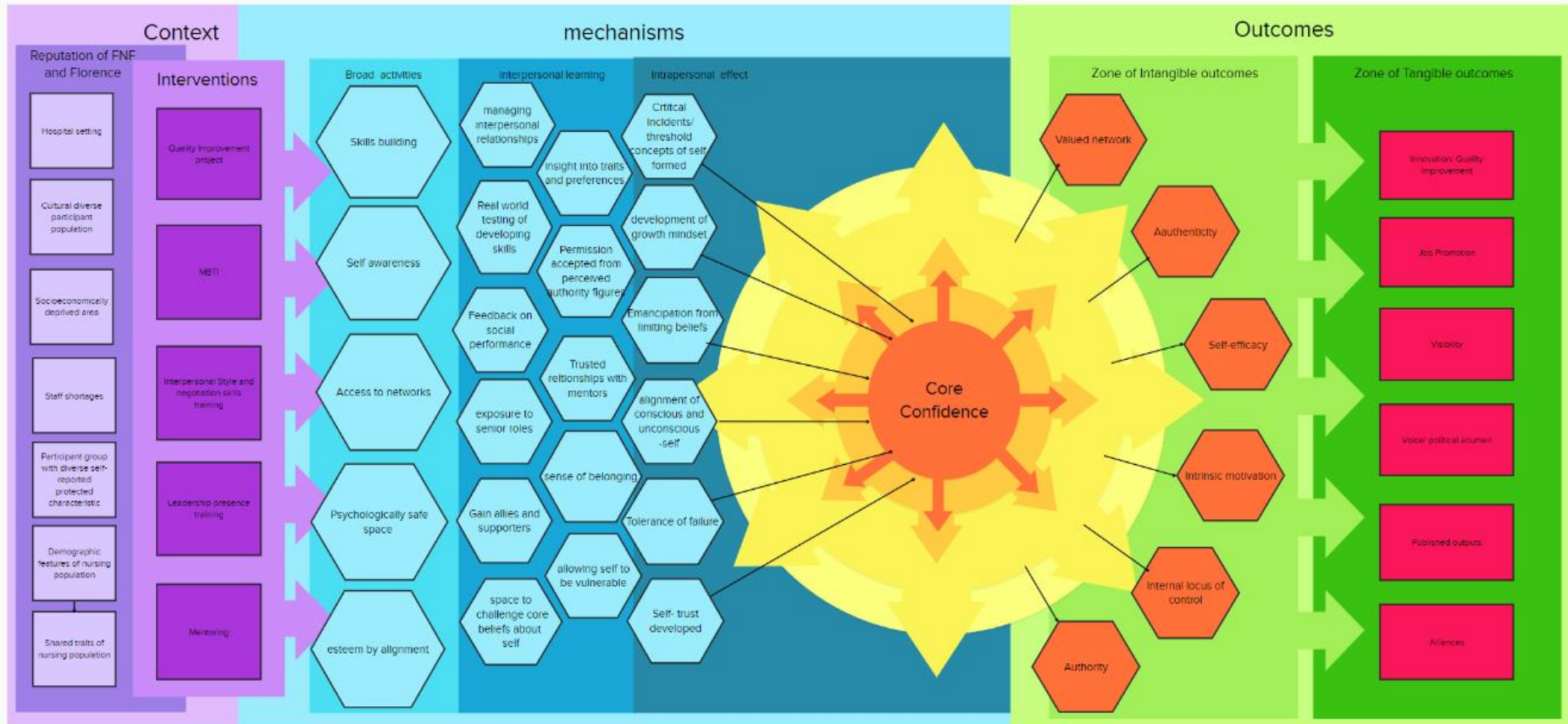
HOW MUCH DO YOU KNOW ABOUT THE SITUATION?



Authenticity: What does this mean?



IMPACT EVALUATION



Leadership Programmes

- Bespoke programme design
- Option for in person, blended or virtual
- Flexible cohort size and targeted at all leadership levels
- Delivered in collaboration with RADA, The Kings Fund The Bravest Path and other subject matter experts



Leadership Scholarship – Applications Open!



- 12 month development programme
- 75 per year across the UK
- 1:1 coaching
- Mentorship from the FNF network
- 2 day compassionate & inclusive leadership residential (The Kings Fund)
- 3 Day communication for leadership skills workshops (RADA)
- Celebratory conference and graduation ceremony
- Improvement project aligned with commissioner's priorities
- Personal budget to pursue individual development opportunities

Join us

**FLORENCE
NIGHTINGALE
FOUNDATION**

Become a member of the FNF Academy

www.youtube.com/watch?v=5sArPCP-cE4



PROMOTE

the next generation of nurse and midwife leaders by annually nominating an aspiring leader to become an **FNF Academy Fellow**



NETWORK & LEARN

at **FNF UK and Global** webinars, virtual and in-person events with exclusive access to recordings



COLLABORATE

with other nurse and midwife members globally through **FNF Connect** and our exclusive **online members portal**



GET INVOLVED

with FNF decision-making by participating in our shared governance structures via our **Membership Advisory Group** and **Shared Governance Forum**



DEVELOP

leadership knowledge and skills through free unlimited access to exclusive **FNF online modules**



SAVE

through discounted access (10% reduction) to **Nightingale Frontline** peer support service



LEARN

with us through elective (self-managed) **placement** and **internship** opportunities with #TeamFNF



INFLUENCE

policy and practice on global health challenges through our thought leadership projects and **FNF Subject Expert Groups**



CELEBRATE

our professions and the legacy of Florence Nightingale as a VIP with your own guest at our annual **Florence Nightingale Commemoration Service** at Westminster Abbey, London






CO-BRAND

your own **leadership development** opportunities with support and resources from #TeamFNF

Stay connected

FNF social media channels

-  @FNightingaleF
-  /florencenightingalefoundation
-  /company/florencenightingalefoundation
-  /florencenightingalefoundation

Website

[Home - Florence Nightingale Foundation \(florence-nightingale-foundation.org.uk\)](https://florence-nightingale-foundation.org.uk)

Email us:

- Membership@florence-nightingale.foundation.org.uk
- Academy@florence-nightingale.foundation.org.uk